

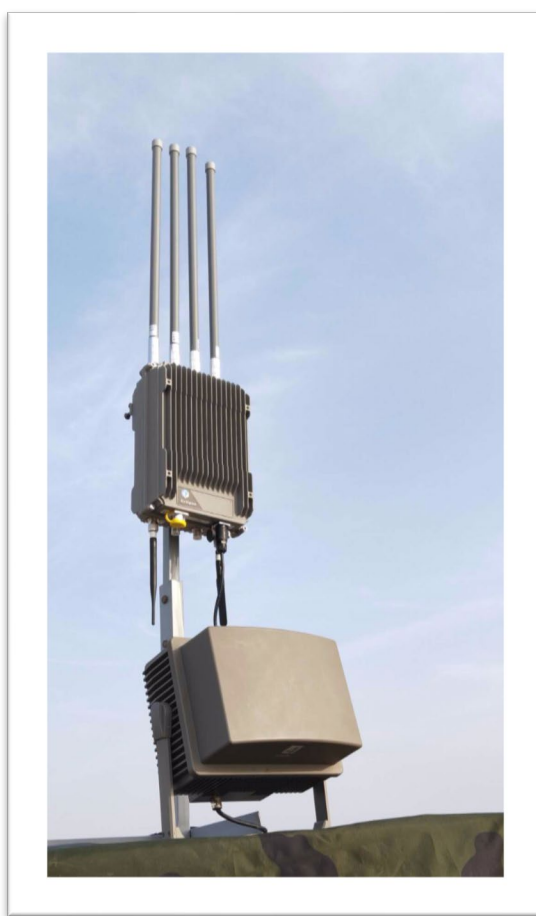


LYNX EYE
ANTI-DRONE SYSTEMS

Radar R1

Lynx Eye R1: Completely innovative system with our development and technology, **100% autonomous and totally portable**, immediate action, manageable by a single individual and capable of obtaining the location of the unmanned aircraft.

Lynx Eye R1 is a **defense** system which countermeasures against the widest range of drone models currently available, whether they are radio controlled by an operator or by autonomous guidance via GPS. It allows to warn intrusion of threatening drones in protected areas up to 8km away.



The passive detection equipment of UAV R1 is highly sensitive and reliable, the standard mode has four frequencies and can be extended to nine frequencies, compatible with the models of G1V, Armor box and Mobile Box. The detecting range is up to 8km.

1. Application field

Advanced ultra-fast response device for detecting the sudden UAV attacks at real time, regardless of whether the user is moving or a static location.

2. Features

The equipment has a great effectiveness and range of action in real situation of threat or combat, the working distance of operation is upto 8km. (in optimal orographic condition this range of detection could even be exceeded).

Electromagnetic Radiation Safety

The important issue that we have considered to ensure 100% high security for your daily use. This clearly differentiates us from other existing equipment in the market that works in a damaging way with dozens of watts.

Each of our equipment is tested and verified by our Departments of Engineering and Systems to ensure high quality and reliability of operation in the most hostile environments.

Portability and lightness are outstanding qualities that allow this device to be transported easily and quickly to the location necessary for the immediate elimination of the threat.

Parameters	Value
Detection range	3-8km
Bands	GPS / BDS / Glonass / 2.4G / 5.8G
	70mHz ~ 6000mhz
Receive sentivity	-95dBm
Monitoring space	360° full
Working temperature	-40°C ~ + 70°C
Dimensions	32cm x 24cm x 15cm
Detect speed	<5s
Target engagement	≥50
Dynamic range	70dB
Tuning range	70mHz ~ 6000mhz
Available communication modulation	FM, 2FSK, 4FSK, GFSK, MSK, BPSK, QPSK, 16QAM, 64QAM, OFDM, DSSS, FHSS
Frequency measurement accuracy	≤10kHz (56mHz broadband)

